



AGRESEARCH LEAD

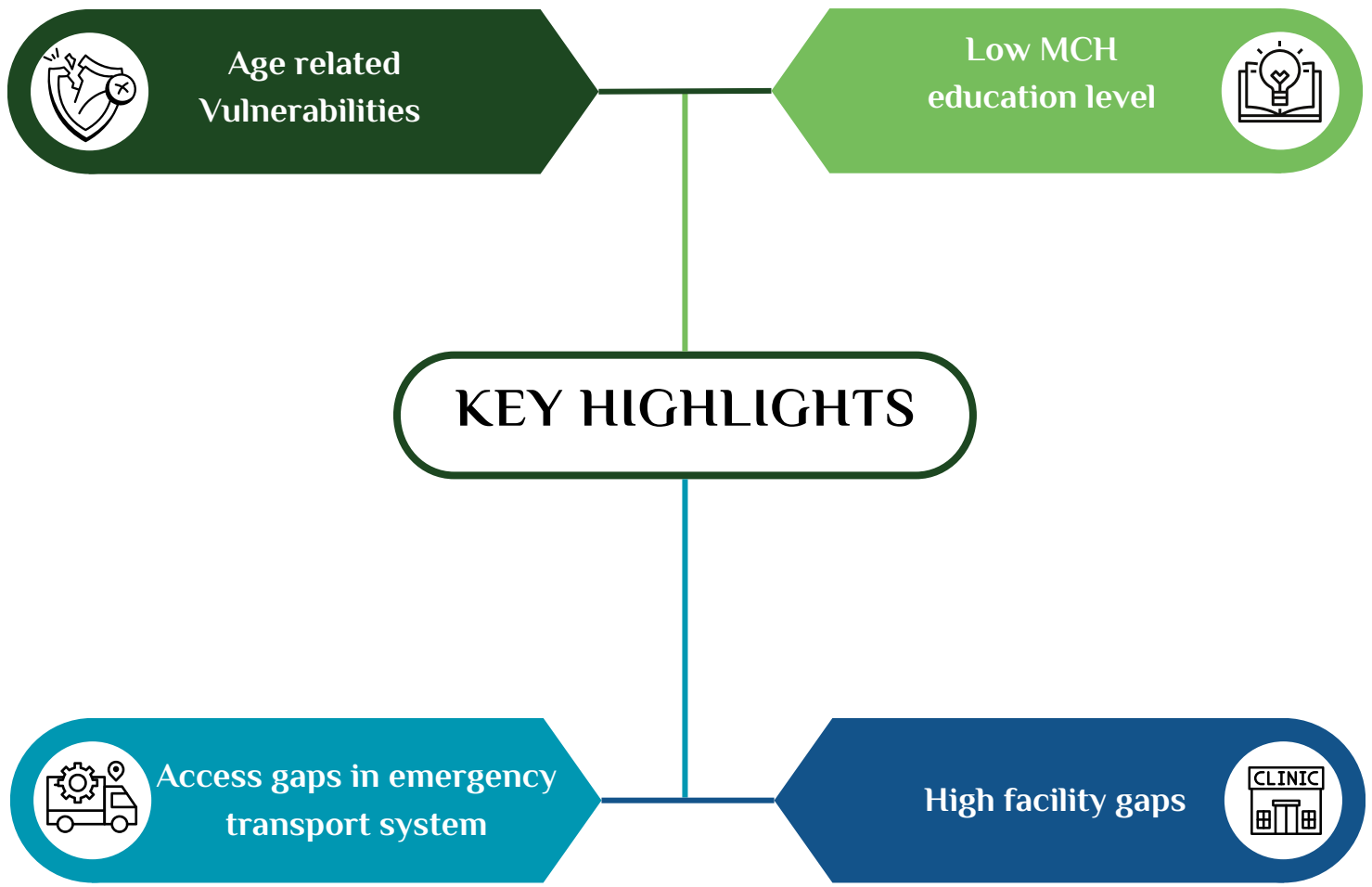
IMPROVING MATERNAL AND CHILD HEALTH IN GHANA

*By Agresearch Lead
(Mohammed Jamaldeen Gariba)*

September
2025

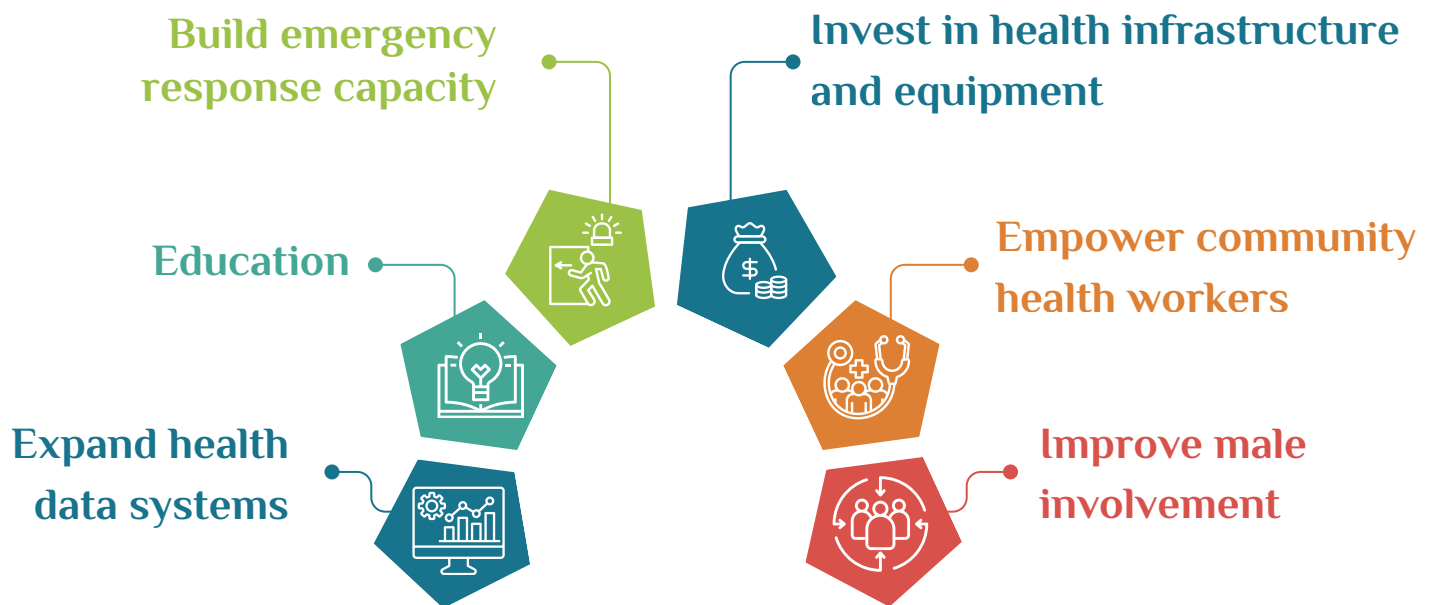


Access to quality maternal and child health (MCH) services is not just a matter of health—it's a cornerstone of development. Recent assessments in Ghana sheds light on both encouraging trends and systemic challenges in delivering essential health services to mothers, children under three, and their families. Data paints a vivid picture of how socio-economic realities, service delivery gaps, and regional inequalities are shaping Maternal and Child Health outcomes.



Health System Implications: Turning Insights into Action

Our findings go beyond data - it surfaces urgent signals for health systems strengthening. Here's what needs to happen:



What This Means for Health Policy and Programming

To strengthen health systems in Northern Ghana and similar contexts stakeholders must adopt a systems approach. This means:

- Equitable access to services, especially in hard-to-reach areas.
- Integrated service delivery that includes emergency, preventive, and inclusive care.
- Community ownership and financing models to ensure sustainability.
- Continuous learning through monitoring and evaluation frameworks